

# SPARE PARTS SECTION

## Hydraulic & Pneumatic Shop Press

Model

**HPM-75P**

Order Code P154

EDITION No : HPH-75P-1

DATE OF ISSUE : 01-2024

The following section covers the spare parts diagrams and lists that were current at the time this manual was originally printed. Due to continuous improvements of the machine, changes may be made at any time without notification.

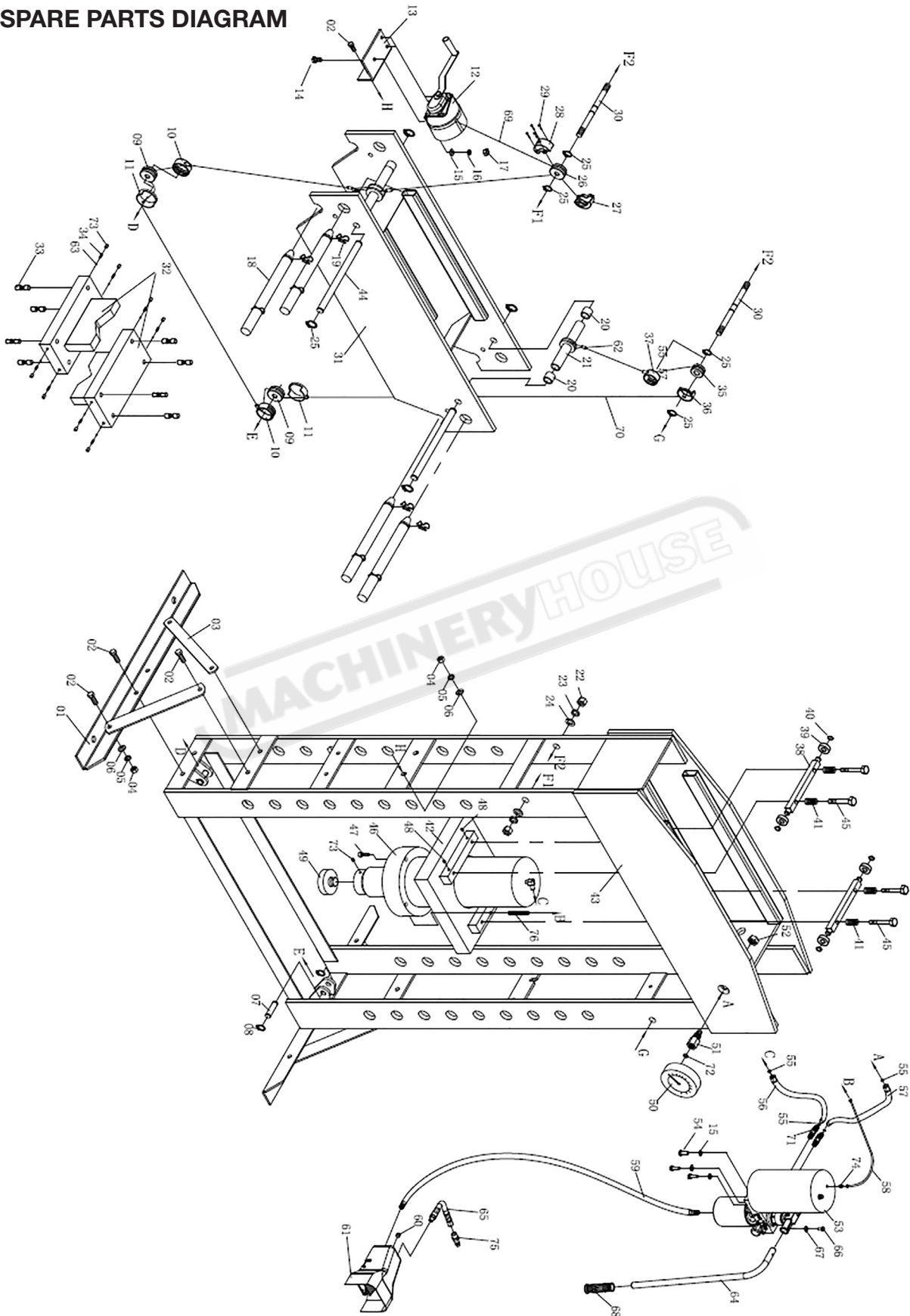
### HOW TO ORDER SPARE PARTS

1. Have your machines model number, serial number & date of manufacture on hand, these can be found on the specification plate mounted on the machine
2. A scanned copy of your parts list/diagram with required spare part/s identified.

#### **NOTE: SOME PARTS MAY ONLY BE AVAILABLE AS AN ASSEMBLY**

3. Go to [www.machineryhouse.com.au/contactus](http://www.machineryhouse.com.au/contactus) and fill out the inquiry form attaching a copy of scanned parts list.

**SPARE PARTS DIAGRAM**

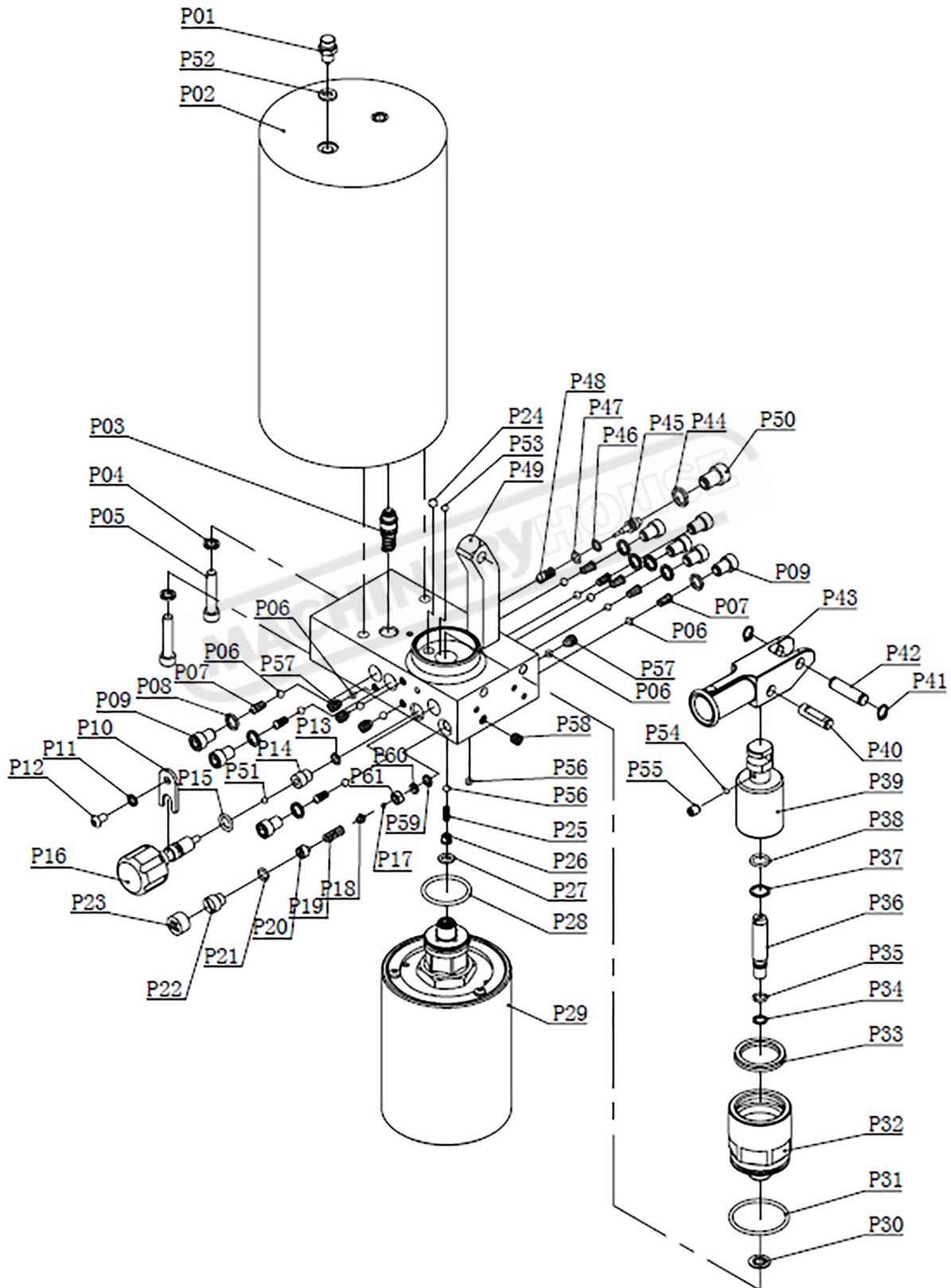


**MAIN SPARE PARTS LIST**

No.	Description	Qty	No.	Description	Qty
1	Base	2	39	Roller	4
2	Bolt	14	40	Retainer Ring	4
3	Support Bar	4	41	Spring	4
4	Nut	14	42	Plate For Ram	1
5	Lock Washer	14	43	Frame	1
6	Flat Washer	14	44	Beam	2
7	Pin	2	45	Bolt	4
8	Retainer Ring	4	46	Ram	1
9	Big Roller	2	47	Screw	4
10	Protection 2	2	48	Screw	4
11	Protection 1	2	49	Saddle	1
12	Hand Winch	1	50	Pressure Gauge	1
13	Fixed Plate	1	51	Connector	1
14	Bolt	3	52	Nut	1
15	Flat Washer	6	53	Pump Assembly	1
16	Lock Washer	3	54	Bolt	5
17	Nut	3	55	O-Ring	4
18	Pin	4	56	Hose	1
19	Retainer Ring	8	57	Hose	1
20	Pipe 2	4	58	PU Hose	1
21	Sleeve 2	2	59	Air Inlet Hose	1
22	Nut	4	60	End Cap	1
23	Lock Washer	4	61	Foot Valve	1
24	Flat Washer	4	62	Sheath	3
25	Retainer Ring	8	63	Steel Ball	8
26	Roller 3	1	64	Handle	1
27	Protection I	1	65	Air Inlet Hose	1
28	Protection II	1	66	Bolt	1
29	Screw	4	67	Flat Washer	1
30	Pin	2	68	Handle Cover	1
31	Bed Frame	1	69	Wire Line	1
32	Heel Block	2	70	Wire Line	1
33	Screw	8	71	Elbow	2
34	Spring	8	72	Washer	1
35	Small Roller	1	73	Screw	9
36	Protection 3	1	74	Connector	1
37	Protection 4	1	75	Connector	1
38	Beam	2	76	Spring	1

**NOTE: SOME INDIVIDUAL PARTS MAY ONLY BE AVAILABLE AS AN ASSEMBLY**

PUMP SPARE PARTS DIAGRAM

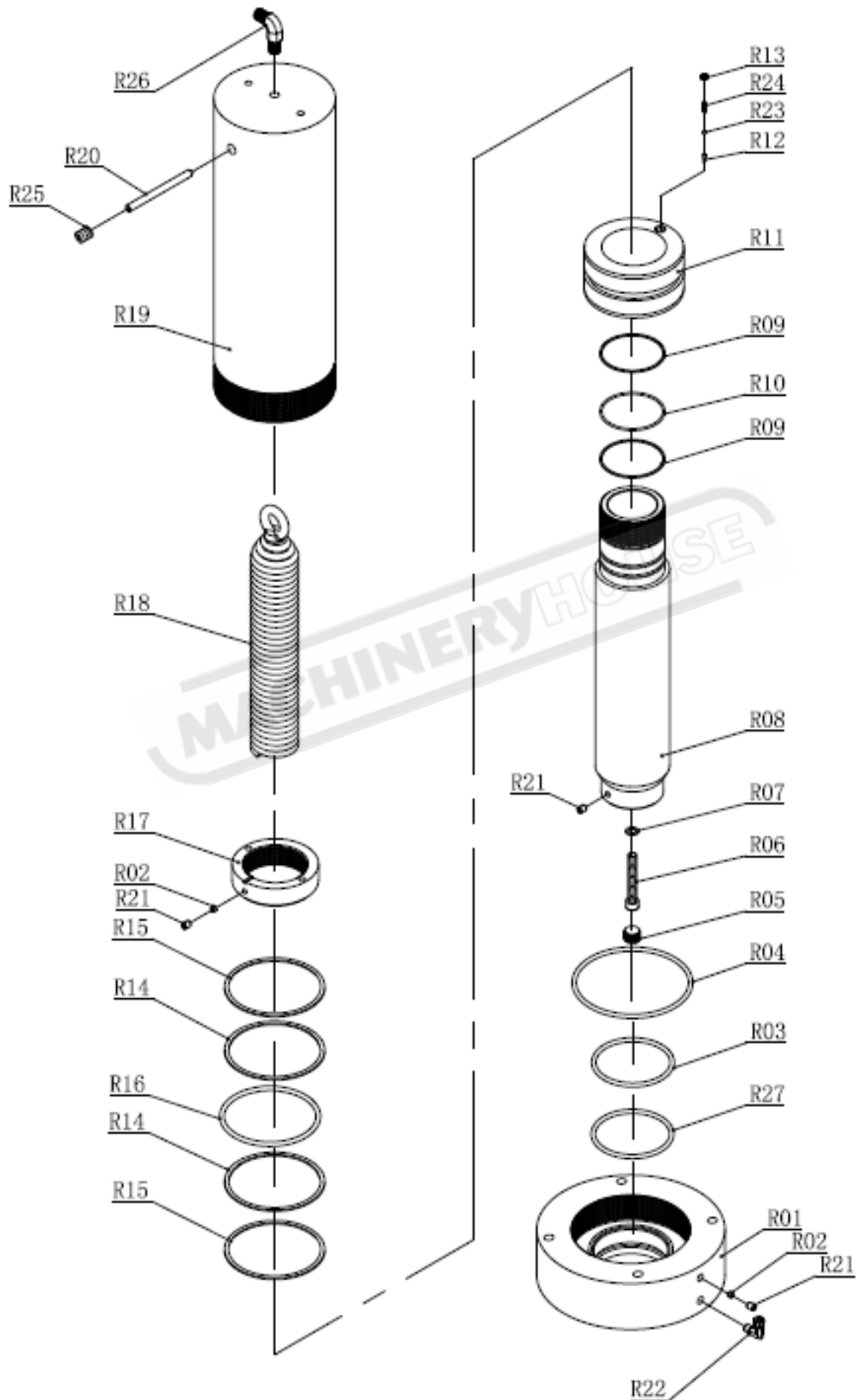


**PUMP SPARE PARTS LIST**

No.	Description	Qty	No.	Description	Qty
P1	Screw	1	P32	Pump Core Seat	1
P2	Oil Reservoir	1	P33	U Ring	1
P3	Connector	1	P34	O Ring	1
P4	Lock Washer	2	P35	Washer	1
P5	Screw	2	P36	Small Pump Core	1
P6	Steel Ball	12	P37	Washer	1
P7	Spring	8	P38	O Ring	1
P8	Copper	8	P39	Big Pump Core	1
P9	Screw	8	P40	Pin	1
P10	U Limit	1	P41	Retainer Ring	2
P11	Lock Washer	1	P42	Pin	1
P12	Screw	1	P43	Handle Bracket	1
P13	Washer	1	P44	Copper	1
P14	Valve Seat	1	P45	Valve Core	1
P15	O Ring	1	P46	O Ring	1
P16	Oil Drain Valve	1	P47	Washer	1
P17	Valve Ball	1	P48	Spring	1
P18	Steel Ball Seat	1	P49	Pump Assembly	1
P19	Spring	1	P50	Screw	1
P20	Screw	1	P51	Steel Ball	1
P21	O Ring	1	P52	Washer	1
P22	Screw	1	P53	Steel Ball	1
P23	Cap	1	P54	Steel Ball	1
P24	Steel Ball	1	P55	Screw	1
P25	Spring	1	P56	Steel Ball	2
P26	Spring Seat	1	P57	Screw	4
P27	Copper	1	P58	Screw	1
P28	O Ring	1	P59	Copper	1
P29	Air Motor	1	P60	Washer	1
P30	Copper	1	P61	Screw	1
P31	O Ring	1			

**NOTE: SOME INDIVIDUAL PARTS MAY ONLY BE AVAILABLE AS AN ASSEMBLY**


**RAM SPARE PARTS DIAGRAM**



**PUMP SPARE PARTS LIST**

No.	Description	Qty
R1	Nut	1
R2	Nylon Block	2
R3	O Ring	1
R4	O Ring	1
R5	End cap	1
R6	Screw	1
R7	Copper	1
R8	Piston Rod	1
R9	Washer	2
R10	O Ring	1
R11	Piston Head	1
R12	Valve Core	1
R13	Screw	1
R14	Retainer Ring	2
R15	Washer	2
R16	O Ring	1
R17	Nut	1
R18	Spring	1
R19	Ram	1
R20	Pin	1
R21	Screw	3
R22	Connector	1
R23	Steel Ball	1
R24	Spring	1
R25	End cap	1
R26	Elbow	1
R27	Washer	1

**NOTE: SOME INDIVIDUAL PARTS MAY ONLY BE AVAILABLE AS AN ASSEMBLY**



**WARNING!**

*Serious injury or death can result from using this machine BEFORE understanding its controls and related safety information. DO NOT operate, or allow others to operate, the machine until the information is understood.*